

# 2022 Master Builders-Bankwest Building Excellence Awards South West



2022 Bankwest Best Regional Project South West Region  
**WINNER**  
**PERKINS BUILDERS**  
Capecare, Armstrong Village





# Best Contract Homes Up to \$250,000

WINNER

WA COUNTRY BUILDERS

Pardelup Approach, Dalyellup

Through the over-sized front door, you are greeted with 31C ceilings, extended through to the master suite and main living. The kitchen presents with an oversized island and a conveniently positioned alfresco off the living. The home is well zoned with two minor bedrooms separated from the master at the very rear. A perfect home for family living.



FINALIST

PLUNKETT HOMES

Handley Road, Harvey



FINALIST

PLUNKETT HOMES

Hayward Street, South Bunbury



# Best Contract Homes \$250,000 - \$320,000

WINNER

PLUNKETT HOMES

Primrose Vista, Millbridge

This contemporary home design features all the mod-cons of today with a large bedroom, home theatre and an expansive open living area that connects to the outdoor alfresco area. The kitchen is complimented by a spacious scullery and laundry area perfect for storage and preparation. The front elevation features a tiled blade wall, render and wide glass door.



Partnered by **Keystart.**

Partnered by **Keystart.**



## Best Contract Homes \$320,000 - \$370,000

### WINNER

#### PLUNKETT HOMES

Osmington Road, Bramley

This modern farmhouse design makes use of the space with generous king-sized bedrooms, two large bathrooms both featuring double vanities and hobless showers. The opening living area showcases a raking ceiling with an exposed ridge beam down the centre, opening up this space to be an entertainer's dream.



### FINALIST

#### WA COUNTRY BUILDERS

Marine Terrace, Geographe



Partnered by **Keystart.**

## Best Contract Homes \$370,000 - \$430,000

### WINNER

#### SHEKINAH CONSTRUCTION

Beach Road, South Bunbury

This custom built modern contemporary, double story home was designed specifically to meet the client's needs, budget, and to fit their small rear block. This home boasts clever design and showcases external textured features and a skillion butterfly roof. The western facing balcony encapsulates the coastal breezes. Downstairs features open-plan living, a gas-strut kitchen servery window, and a custom-built staircase.



### FINALIST

#### BEN RYAN BUILDING

Siding Road, West Busselton



### FINALIST

#### BEN RYAN BUILDING

Quininup Road, Yallingup



Partnered by **Keystart.**



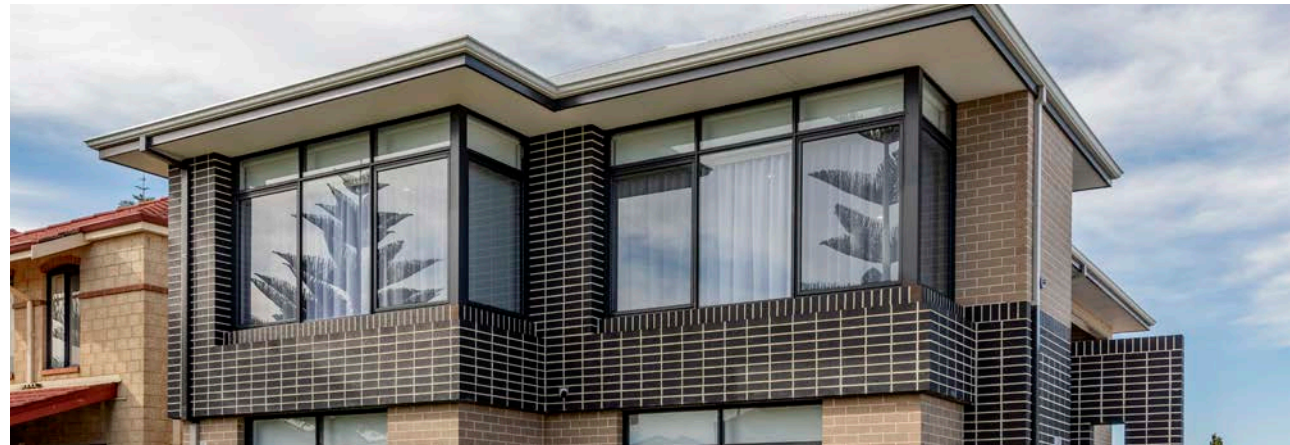
## Best Contract Homes \$430,000 - \$500,000

### WINNER

#### WA COUNTRY BUILDERS

Marlston Drive, Bunbury

Contrasting brick stack bond cuts presents a stylish figure with the surrounding rendered homes. Main living areas are upstairs with an open plan living and spacious balcony. A large gas fireplace featuring stack bond bricks, tying it in with the external façade.



### FINALIST

#### JAG BUILT HOMES

Blechynden Street, Bridgetown

Partnered by **Midland Brick**

## Best Contract Homes \$500,000 - \$650,000

### WINNER

#### WA COUNTRY BUILDERS

Spoonbill Road, Vasse

Based on the standard design "The Jarrahdale" is a grand country farmhouse with a simple refined layout and fabulous grand living space with outstanding raked central ceilings coupled with a spacious well organised kitchen. The house has great zoning ensuring everyone has their own space when required. Wonderfully detailed accents throughout combined with a classic and refined external appearance enables for a timeless appearance.



### FINALIST

#### MARK B BUILDING

Penn Street, Boyanup

### FINALIST

#### PLUNKETT HOMES

Lecaille Court, Dunsborough



Partnered by **bankwest**



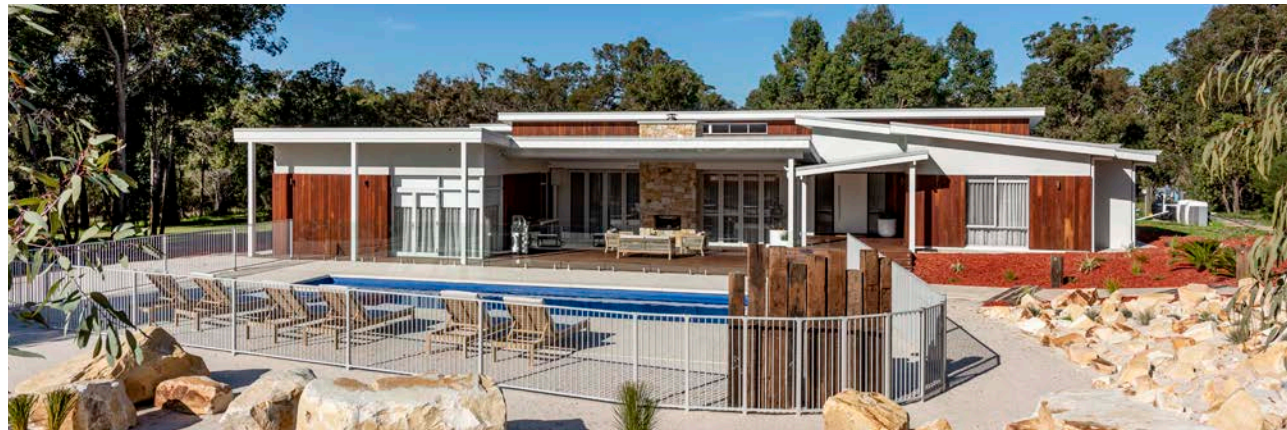
## Best Contract Homes \$650,000 - \$800,000

### WINNER

#### EASYBUILD WA

Australind Road, Leschenault

This spacious home was created to maximize living and entertainment on a private bush block located near the picturesque Leschenault Peninsula Conservation Park. The home represents a modern way of living combined with the natural bush surrounds. Highlights include Donnybrook stone feature fireplace, 288m2 polished salt and pepper concrete floors, trend plank spotted gum feature cladding, Easy build custom concrete bench top and basins, 12m pool with exposed aggregate, smart wiring and alhambra travertine tiling.



Partnered by **BUNNINGS  
TRADE**

## Best Contract Homes \$1,000,000 - \$1,500,000

### WINNER

#### BLUEWATER BUILDING CO

Hammond Road, Yallingup

Built on a steep slope facing due west this two-storey beach house takes full advantage of its position overlooking Yallingup Beach. Built over 3 levels with the rooms on the upper floor having ocean views. The kitchen and living area open on to a large under cover alfresco area which is protected from the prevailing southerly winds. The perfect holiday home.



Partnered by **AV TRUCKS  
IVECO**

## Best Overall Display Home

### WINNER

#### PLUNKETT HOMES

The Ambergate  
Caretta Street, Vasse

A classic four-bedroom, two-bathroom contemporary home with a modern façade of stone cladding, neutral colours and clean bold lines. The practical and functional layout is perfectly suited to today's modern family lifestyle. The front of the home features a theatre and resort-style master-suite with a huge walk-in robe, and luxurious ensuite with a free-standing bathtub.



### FINALIST

#### SUMMIT SOUTH WEST

Aliya

Caretta Street, Vasse

Partnered by **Keystart.**



## Best Alterations & Additions \$150,000 - \$230,000 WINNER

### SHEKINAH CONSTRUCTION

Clarke Street, South Bunbury

The clients were wanting a retreat to the front of their existing home that included a spacious master bedroom with cathedral ceilings and an open ensuite. Features include a double walk-in shower, and a custom-built floating vanity that complements the mosaic tiled splash-back. Outside the home, a beautiful limestone feature wall was created for privacy, as well as a re-roof and a clad facade was integrated into the existing building.



Partnered by **AV TRUCKS  
IVECO**

## Best Alterations & Additions \$430,000 - \$530,000 WINNER

### MARK B BUILDING

Dunstan Street, South Bunbury

This challenging renovation included a complete re-roof onto a 45 degree pitch roof. No expense was spared with granite tops through renovated kitchen and ensuite areas, including bathroom and laundry alfresco areas. Moving outside a new patio addition composite decking with commercial frames added for extra strength and security.



Partnered by **AV TRUCKS  
IVECO**

## Overall Best Alterations & Additions WINNER

### MARK B BUILDING

Dunstan Street, South Bunbury



Partnered by **AV TRUCKS  
IVECO**



## Best Alternative Construction Home

### WINNER

#### BLUEWATER BUILDING CO

Hammond Road, Yallingup

Built on a steep slope this three level home is anchored into the slope with a brick retaining wall and brick garage. The cladding has been broken up with the use of limestone cladding which extends from outside into the entry of the home.



### FINALIST

#### BEN RYAN BUILDING

Siding Road, West Busselton

### FINALIST

#### BEN RYAN BUILDING

Quininup Road, Yallingup



Partnered by **Colorbond**  
THE COLOURS OF AUSTRALIA SINCE 1966

## Best Retail Building Under \$1,500,000

### WINNER

#### INNOVEST CONSTRUCTION

Chapman Hill Road, Chapman Hill

The Hippo lakes Café/farm shop is nestled amongst the beautiful rural setting of Chapman Hill and comprises of a traditional timber framed/weatherboard construction, exposed aggregate entertaining area, paths and curved rendered garden beds externally. The function room comprising of high vaulted ceilings and a large under cover verandah overlooking the beautiful rural setting.



Partnered by **Colorbond**  
THE COLOURS OF AUSTRALIA SINCE 1966

## Best Industrial Building \$5,000,000 - \$10,000,000

### WINNER

#### PERKINS BUILDERS

Cockie Bend, Collie

The Koolinup Emergency services facility marks a new era for bushfire management as the State's first regionally based Level 3 Incident Control Centre. The multipurpose centre provides facilities to manage emergencies as well as a base for an emergency driving training school for Department of Fire and Emergency staff and emergency service volunteers. Both services are vital to support the State's high season firefighting capabilities and vehicle fleet.



Partnered by **Colorbond**  
THE COLOURS OF AUSTRALIA SINCE 1966



## Best Aged Care Building \$20,000,000 - \$50,000,000 WINNER

PERKINS BUILDERS

Naturaliste Terrace, Dunsborough

Cape Care Armstrong Village Dunsborough is the first residential care facility for the Dunsborough community. Innovative design and technology create a vibrant community hub, in harmony with the natural environment. The 80-bed residential care facility provides amenities expected of an aged care facility including a dementia ward and 21 Independent Living Apartments allow residents access to facilities including meeting rooms, a theatre room, hairdresser/beautician, doctor's room and allied health.



Partnered by **Midland Brick**

## Excellence in Brick & Block Paving

Paul Hansford & Plunkett Homes

Primrose Vista, Millbridge

Partnered by **Midland Brick**



## Excellence in Cabinet Making



Geographe Cabinets & Bluewater Building Co

Hammond Road, Yallingup

Partnered by **MASTER BUILDERS INSURANCE BROKERS**  
*Your Industry Specialists*

## Excellence in Carpentry

Caseys Carpentry Services & WA Country Builders

Spoonbill Road, Vasse

Partnered by **MASTER BUILDERS INSURANCE BROKERS**  
*Your Industry Specialists*



## Excellence in Ceilings



Ceiling Works & Easy Build WA

Australind Road, Leschenault

Partnered by **MASTER BUILDERS INSURANCE BROKERS**  
*Your Industry Specialists*

## Excellence in Concreting

Galcat Concreting & Plunkett Homes

Lecaille Court, Dunsborough

Partnered by **MASTER BUILDERS INSURANCE BROKERS**  
*Your Industry Specialists*



## Excellence in External Finishes



Bermuda Plastering & Plunkett Homes

Lecaille Court, Dunsborough

Partnered by **MASTER BUILDERS INSURANCE BROKERS**  
*Your Industry Specialists*



## Excellence in Floor & Wall Tiling

P.H. Cunha & D Pinto & WA Country Builders

Spoonbill Road, Vasse

Partnered by **BUNNINGS  
TRADE**



## Silver Trowel

RH Carn & NA Coxall & Plunkett Homes

Primrose Vista, Millbridge

Partnered by **Midland Brick**



## Excellence in Painting



Costello Painters and Decorators & WA Country Builders

Spoonbill Road, Vasse

Partnered by **BUNNINGS  
TRADE**

## Tradesperson of the Year



Caseys Carpentry Services & WA Country Builders

Spoonbill Road, Vasse

Partnered by **BUNNINGS  
TRADE**

## Excellence in Plastering

Easycrete Pty Ltd & Easy Build WA

Australind Road, Leschenault

Partnered by **cbus  
super**



## Excellence in Roofing



Mark B Building & Peak Constructions

Penn Street, Boyanup

Partnered by **Colorbond**  
THE COLOURS OF AUSTRALIA SINCE 1966



Best Customer Service Small Builder

BEN RYAN BUILDING

Partnered by  bankwest



Employer Trainer of the Year

PERKINS BUILDERS

Partnered by  SKILLHIRE



Best Customer Service Medium Builder

PLUNKETT HOMES

Partnered by  bankwest



Employer Safety Award

PERKINS BUILDERS

Partnered by  SKILLHIRE



Small Builder of the Year

BEN RYAN BUILDING

Partnered by  cbus super



Best 2nd Year Carpentry Apprentice

BEN WALL

Ben Ryan Building

Partnered by  SKILLHIRE



Medium Builder of the Year

PLUNKETT HOMES

Partnered by  cbus super



Excellence in Workplace Health & Safety

PERKINS BUILDERS

Break O'Day Drive, Australind

Partnered by  SKILLHIRE





## 2022 Best Country Home South West Region WINNER

EASYBUILD WA

Australind Road, Leschenault



FINALIST

WA COUNTRY BUILDERS

Spoonbill Road, Vasse

FINALIST

BLUEWATER BUILDING CO

Hammond Road, Yallingup



Partnered by 

## 2022 Bankwest Best Regional Project South West Region WINNER

PERKINS BUILDERS

Naturaliste Terrace, Dunsborough



FINALIST

INNOVEST CONSTRUCTION

Protea Pride, Hippo Lakes



FINALIST

PERKINS BUILDERS

Cockie Bend, Collie



Partnered by 



# 2022 Master Builders-Bankwest Building Excellence Awards South West

Thank you to our supporting partners

Naming Rights and Principal Partner



Insurance Partner



Super Fund Partner



Gold Partner



Silver Partners



**Keystart.** **Midland Brick**

